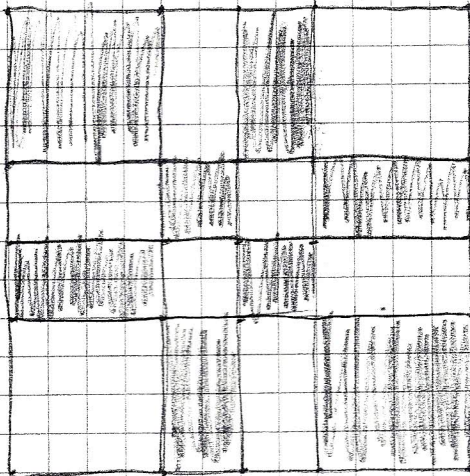



GQG BOM


JUNE, 2015

Nine Patch Variation


12 1/2" unfinished

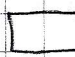



White on Black 

Black on White 


White on Black:

Cut: 2 - 4 1/2" 


4 - 2 1/2" x 4 1/2" 

2 - 2 1/2" 

Black on White:

Cut: 2 - 4 1/2" 

4 - 2 1/2" x 4 1/2" 

2 - 2 1/2" 

ARRANGE AS SHOWN

Barbara Brooks